

The Use of Bacteria as Markers of Leukemic Lymphocytes and for the Isolation of Natural Killer Cells

M. Teodorescu, C. Hsu, A. Bratescu, K. P. DeBoer, R. Nelson, R. Kleinman, C. M.-J. Wen, E. P. Mayer, and E. J.-M. Pang

A. Abstract

Human lymphocyte subpopulations as well as leukemic lymphocytes can be identified and enumerated in blood smears by using bacteria that bind spontaneously to lymphocytes or by using bacteria to which antibodies are chemically coupled. The mechanism of natural binding of bacteria to lymphocytes was shown to involve a lectin on the lymphocyte surface and a carbohydrate on the bacteria. Also, we found that natural killer (NK) cells can be separated by negative selection using monolayers of bacteria. A subpopulation of T cells, identified by their binding of *B. globigii*, was shown to be suppressors for NK cells.

B. Introduction

The methods used routinely to identify lymphocyte subpopulations involve the separation of lymphocytes from other blood cells followed by staining with fluorescent antibodies and/or rosette formation with erythrocytes. These procedures are all difficult to standardize and suffer from subjective interpretations. Moreover, the loss of particular subpopulations of cells and the inability to assess the cellular morphology can cause inaccuracies.

We have developed methods of identifying lymphocyte subpopulations in blood smears by using bacteria as carriers for purified antibody against cell membrane antigens or bacteria that bind spontaneously to lymphocytes (Teodorescu et al. 1977a, 1979a). Antibody-coated bacteria have been used to identify B and T cells in smears of peripheral blood and bacteria that bind spontaneously have been used to identify and enumerate B cells as well

as two B and four T cell subpopulations. Also, bacteria have been used to identify leukemic lymphocytes in cell suspensions or in blood smears (Nelson et al. 1979; Teodorescu et al. 1977b). A method has been developed to separate various lymphocyte subpopulations by bacterial adherence and functional differences among them have been demonstrated (Kleinman and Teodorescu 1978, 1979; Kleinman et al. 1980).

C. Material and Methods

I. Bacterial suspensions

Bacteria were grown and fixed as previously described (Teodorescu et al. 1979a).

II. Labeling the Lymphocytes with Bacteria in Stained Blood or Bone Marrow Smears

The procedure previously described has been followed. Briefly, heparinized blood was collected and the cells were washed. Bacteria were added in excess to small samples of blood cells, centrifuged for 6 min at 900 g to promote binding, and centrifuged twice more at 150 g for 10 min to remove the unbound bacteria. The suspension was smeared and stained with Wright's stain.

III. Separation of Lymphocyte Subpopulations by Bacterial Adherence

The procedure previously described was followed (Kleinman and Teodorescu 1978, 1979; Kleinman et al. 1980). Briefly, bacteria were coupled to glutaraldehyde-fixed gelatin layers. Monocytes were removed by glass wool adherence and the lymphocytes purified by Ficoll-hypaque gradient centrifugation. The lymphocytes were centrifuged against bacterial monolayers, and the nonadherent cells were separated from the adherent cells.

D. Results and Discussion

I. Acute Lymphocytic Leukemias

With rare exceptions, bacteria bound abundantly to lymphocytes (Fig. 1). We studied 12 patients with acute lymphocytic leukemia (ALL) using bacteria as well as fluorescent antibodies (Hsu and Morgan 1980). Of these cases five were classified as pre-B cells based on a relatively low percentage of Ig⁺ cells but high percentage of lymphocytes binding *B. melitensis*, a B cell marker independent of surface Ig (Teodorescu et al. 1979b). In all five of these patients, although the percent age of Ig⁻ Bm⁺

cells was high, the percentage of Ig⁺ cells was relatively low with a relatively normal κ/λ ratio (Fig. 2). This observation suggests that the cells were arrested at a stage of differentiation much earlier than that in which the surface Ig is exposed. In chronic lymphocytic leukemia (CLL) it appears that cells with undetectable surface Ig coexist with Ig-bearing cells of only one type of light chains (Nelson et al. 1979). The existence in one patient of a higher percentage of Ig⁺ cells than cells that bound *B. melitensis* suggests that sometimes the Ig is of exogenous origin. This was also reflected by the large overlap between κ -bearing and λ -bearing lymphocytes.

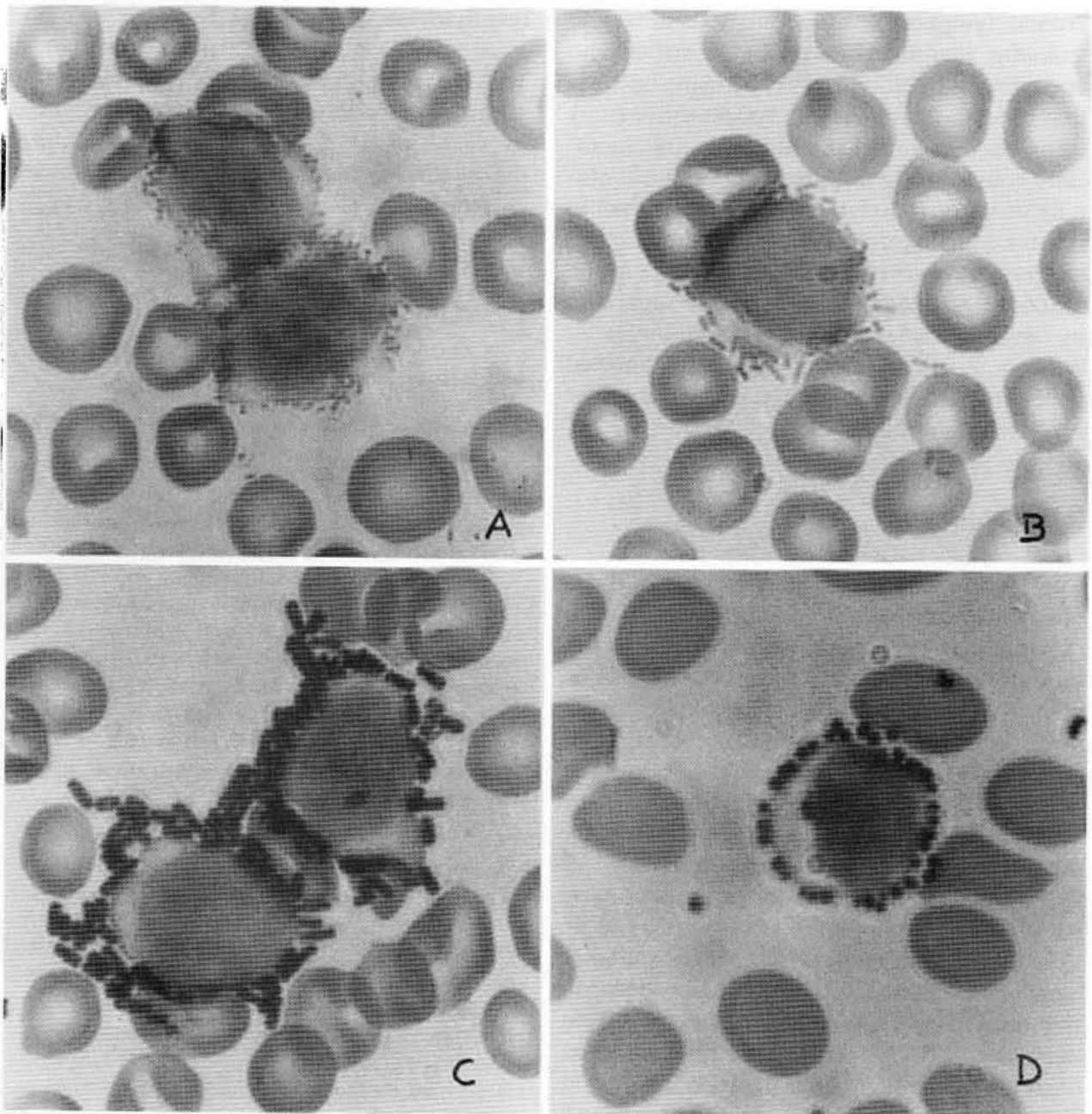


Fig. 1. Lymphocytes labeled by bacteria in blood smears of patients with leukemia. **A** *B. melitensis*; **B** *E. coli*; **C** *B. globigii* and **D** *S. aureus*

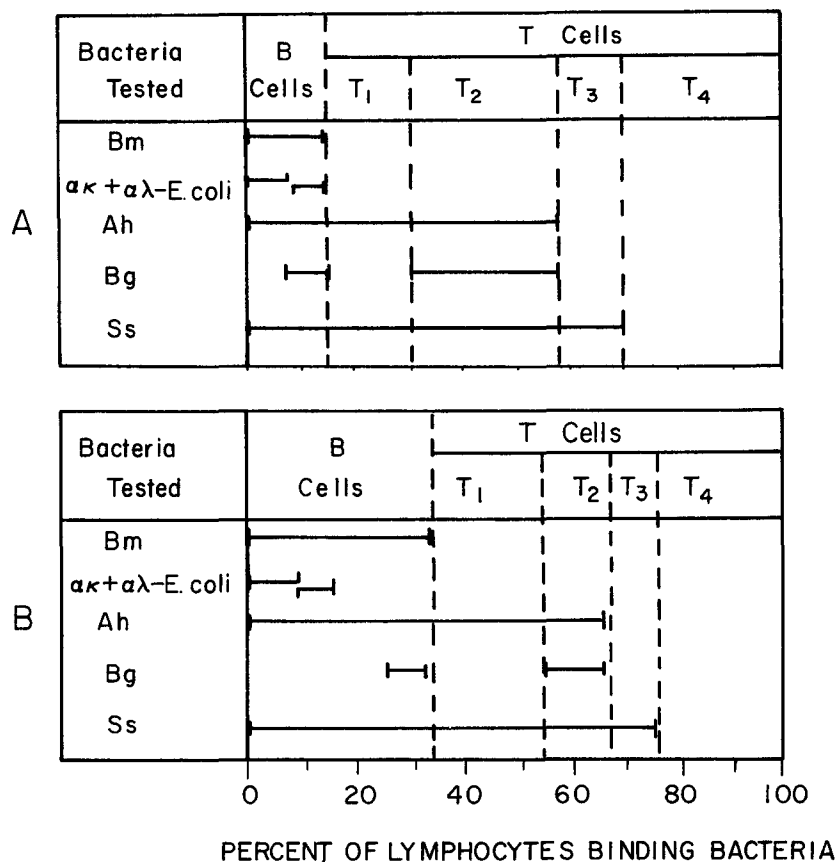


Fig. 2. The map of human lymphocyte subpopulations in blood smears of a normal donor (A) and a patient with ALL (B) Note the larger B cell population than Ig^+ cell population with normal κ/λ ratio

One patient (14-month-old female) had familial chronic myelocytic leukemia (four cases diagnosed in the same family, Ph^{1-}). The patient was studied here during an exacerbation and found to have relatively high percentage of Bm^+ lymphocytes which was much higher in the peripheral blood than in the bone marrow. At the same time the percentage Ig^+ cells was normal. The coexistence of leukemic pre-B cells with CML cells was also described in 3 out of 20 cases of CML by Greaves (Greaves 1979). This observation suggests that B cells and myelocytes may have an immediate common precursor.

II. The Mechanism of Binding of Bacteria by Lymphocytes

We put forward the hypothesis that bacteria bind as the result of an interaction between a lectin on the lymphocyte surface and a carbohydrate on the bacteria (Teodorescu et al. 1979b). The following results were obtained in its support:

1. The binding of *B. melitensis* to B cells was prevented by α -methyl-D-mannoside (α -MM) but not by other sugars, suggesting that one of the lectins involved in binding is similar to Concanavalin A (Con A);

2. The binding of *B. melitensis* to B cells was prevented by pretreatment of the peripheral blood lymphocytes (PBL) with 5% α -MM, but pretreatment of bacteria had no effect;

3. An *Escherichia coli* mutant (strain 2023) which binds to B cells and part of the T cells was also agglutinated by Con A, but its parental strain was not; the binding of this mutant to B cells was also inhibited by α -MM;

4. Bacteria that bind to human lymphocytes were agglutinated at high titers by various plant lectins, while those that do not bind were agglutinated at low titers or not at all;

5. Bacteria that bind to B-cells as well as those that bind to B- and T-cells were agglutinated by Con A, *Lens culinaris* agglutinin, and *Pisum sativum* agglutinin, whose carbohydrate specificities were α -D-mannosyl- and α -D-glucosyl- residues;

6. The "receptors" on lymphocytes but not those on bacteria were sensitive to pronase, suggesting that the protein (lectin) was on the lymphocyte surface; and

7. Bacteria still bound after being heated at $121^\circ C$ or being fixed with formaldehyde.

Lectin-sugar interactions have been shown to be involved in a variety of cellular interactions and recognition processes (Simpson et al. 1978). Since lymphocyte subpopulations are

selectively responsive to different lectins, these cells may interact among themselves or with other cells using their lectins or their carbohydrates. Thus, bacteria may recognize functional "arms" of lymphocyte subpopulations.

III. The Binding of Bacteria to CLL Lymphocytes

Both *E. coli* coated with anti-light chain antibody and *B. melitensis* bind to a substantial number of CLL lymphocytes (Nelson et al. 1979; Teodorescu et al. 1977b). Other bacteria have also been found to bind to these cells, suggesting the existence of a heterogeneity within the malignant clone (Teodorescu et al. 1977b). Based on our results suggesting that lymphocytes have surface lectins, we speculated that these lectins are somehow involved in the control by other cells of malignant lymphocyte proliferation. Therefore, we put forward the hypothesis that with the progression of disease lymphocytes with less lectins are selected and grow uncontrolled.

We determined the binding of several strains of bacteria to CLL lymphocytes in blood smears of 24 patients. We found a statistically significant correlation ($p=0.001$) between binding indices and symptom status, i.e., the symptomatic patients had an average binding index of 35% and the asymptomatic 56.6% (Nelson et al. 1979).

Table 1. The relationship between binding indices for bacteria and survival in CLL patients^a

Patient	Binding index	Interval between tests (months) or between the first test and death	Binding index
C.C.	70	26	55
S.F.J.	66	24	54
S.L.	60	20	53
TC	56	25	53
L.G.	46	24	46
W.J.	45	26	33
K.M.	45	25	45
F.A.	36	23	dead
K.I.	33	5	dead
B.E.	26	32	26
S.R.	11	13	dead
B.M.	7	16	dead

^a The binding index was calculated as an average of the percentages of CLL lymphocytes that bound ten different bacteria

To demonstrate whether our observation is also relevant in predicting patient survival, we listed 12 patients in the order of binding indexes (Table 1) and followed them longitudinally. We found that the patients with low binding index also had poor survival rates, suggesting that this index may be of prognostic value.

IV. Isolation of Natural Killer Cells by Bacterial Adherence

We have previously shown that some of the lymphocyte subpopulations identified by bacterial adherence are functionally different (Kleinman and Teodorescu 1978; 1979; Kleinmann et al. 1980). Since T_4 cells do not bind any bacteria, they were readily isolated by negative selection by adsorbing on bacterial monolayers B cells, T_1 , T_2 , and T_3 cells. Most of the natural killer (NK) activity of the peripheral blood lymphocytes (PBL) was concentrated in the T_4 lymphocyte subpopulation (Kleinman et al. 1980). The T_4 cell population contained about 75% cells with receptors for Fc of IgG, which have been shown to be indicative of NK cells (West et al. 1977).

We investigated whether the activity of NK cells was controlled by another lymphocyte subpopulation identified by bacteria. When the ^{51}Cr release in 4-h assay was determined at increasing ratios of lymphocyte/target cells, we found that the PBL and T_4 cell curves never merge. This observation suggested that the T_4 cells were prevented from acting by another cell population. This inhibitory effect was not due to a simple dilution of NK cells, steric interference, or to a competition for targets. In fact, only when living T_2 cells were added to T_4 cells did the inhibition occur; when T_1T_3 cells were added the inhibition did not occur. Thus, T_2 cells appear to be suppressors for NK cells.

Although evidence has been accumulating that the NK activity is important in vivo in the defense against leukemic cell proliferation, the reason for the exquisite sensitivity of malignant cells to NK cells has not been demonstrated. It is worth noting that T_4 cells do not bind any of the bacteria tested (over 60 strains tested), and therefore, they are unlikely to have lectins. On the other hand, lymphoblastoid cell lines bind well and indiscriminately various bacteria. Thus, we may speculate that during malignant transformation various new

lectins are exposed and attract preferentially the "lectinless" (negative replica) lymphocytes (or monocytes), resulting in killing. When we tested the binding properties of T₄ cells compared with T₂ cells, we found that the former binds exclusively to CEM lymphoblastoid cells but not to Chang hepatoma cells and that T₂ cells bound well to Chang cells but not to CEM cells.

Based on the results presented above or published elsewhere (Nelson et al. 1979) bacteria can be useful reagents for the identification and characterization of leukemic lymphocytes and of the cells that may be involved in the defense against leukemic cells. Since we have developed the necessary technology of selecting mutants of *E. coli* with various binding properties (Mayer and Teodorescu, 1980), the possibility exists of developing a large number of useful reagents that offer obvious advantages.

References

- Greaves MF (1979) In: Neth R, Gallo RG, Hofschneider PH, Mannweiler K (eds) *Modern trends in human leukemia III*, Springer, Berlin Heidelberg New York, p 335 – Hsu CCS, Morgan ER (1980) *Am J Clin Path* 73:633 – Kleinman R, Teodorescu M (1978) *J Immunol* 120:2020 – Kleinman R, Teodorescu M (1979) *Cell Immunol* 48:43 – Kleinman R, DeBoer KP, Teodorescu M (1980) *Clin Exp Immunol* 39:510 – Mayer EP, Teodorescu M (1980) *Infect Immun* 29:66 – Nelson R, Bratescu A, Teodorescu M (1979) *Cancer* 44:1665 – Simpson DL, Thorne DR, Loh HH (1978) *Life Sci* 22:727 – Teodorescu M, Mayer EP, Dray S (1977a) *Cell Immunol* 29:353 – Teodorescu M, Mayer EP, Dray S (1977b) *Cancer Res* 37:1715 – Teodorescu M, Bratescu A, Mayer EP (1979a) *Clin Immunol Immunopathol*, 13:194 – Teodorescu M, Wen CM-J, Mayer EP (1979b) *Fed Proc* 38:1461 – West W, Cannon G, Kay HD, Bonnard G, Herberman R (1977) *J Immunol* 118:355.